



City of  
Mount Gambier

# Mount Gambier

## *Regional Guide*



We acknowledge the Boandik peoples  
as the Traditional Custodians of the land  
Mount Gambier sits upon today.

We respect their spiritual relationship with  
the land and recognise the deep feelings  
of attachment our First Nations peoples  
have with the land.



# Mount Gambier

Mount Gambier; located in southern South Australia, perfectly positioned in the Limestone Coast.

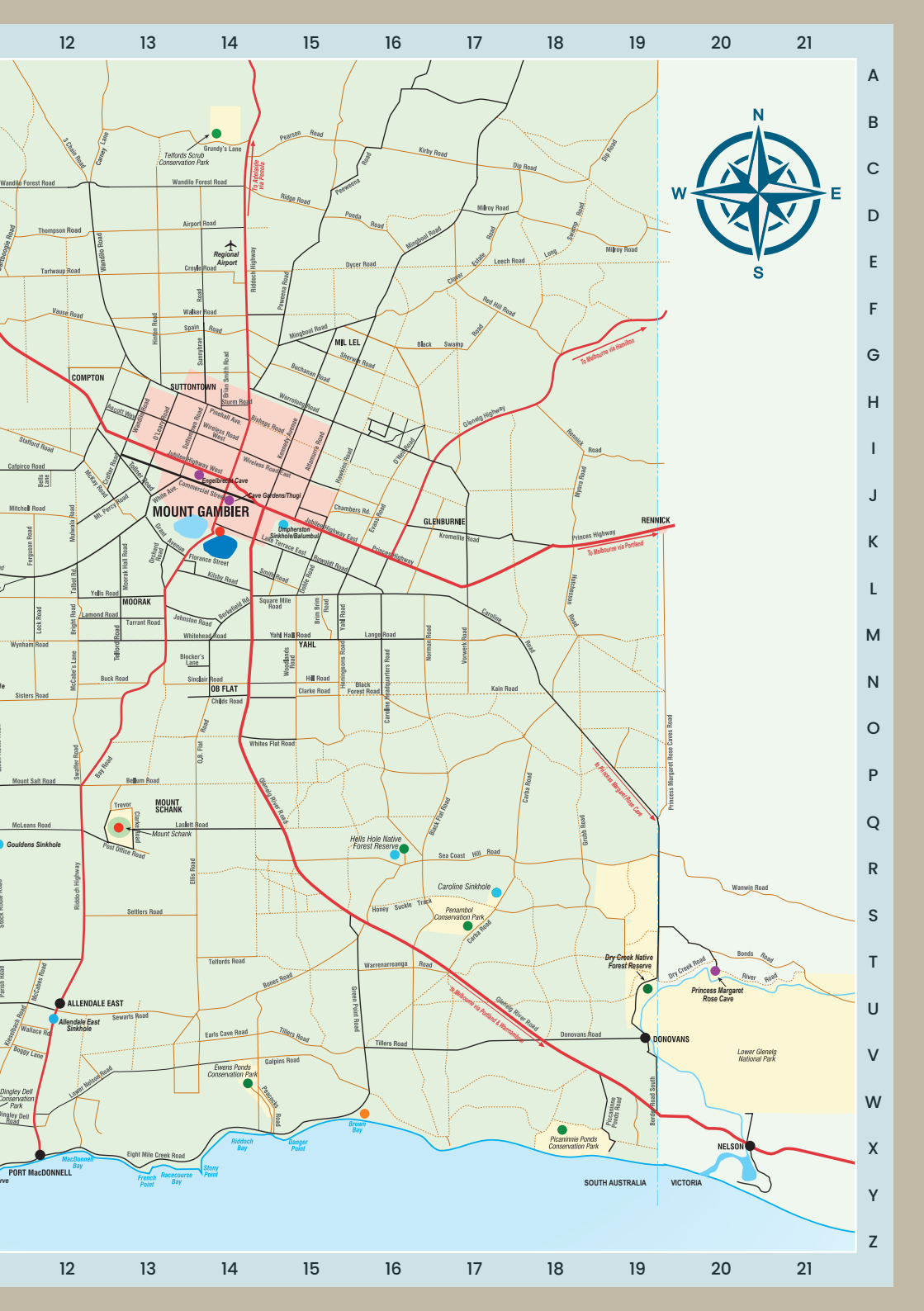
We are the best place to base yourself from as you explore our city and furthermore, the landscape of sinkholes, cave systems and crater lakes.

We are here to help you *explore...*

Front cover: Blue Lake/Warwar by Czech Aus Out  
Crater Lakes by Czech Aus Out









Cave Garden/Thugi by Raising Wanderers



# Explore

Regional Map	<b>2</b>
Sinkholes	<b>6</b>
Caves	<b>8</b>
Crater Lakes	<b>10</b>
Ponds & Rivers	<b>12</b>
Shorelines	<b>13</b>
Conservation Parks & Forests	<b>14</b>
Volcanoes	<b>17</b>
Mount Gambier	<b>18</b>
Mount Gambier Visitor Centre	<b>20</b>



Viewing Platform Only



No Dogs



Water Access



Public Toilets



Fee For Entry



Wheelchair Accessible



# Sinkholes



Umpherston Sinkhole / Balumbul by Czech Aus Out



## CAROLINE SINKHOLE

Follow the path from the car park in Penambol Conservation Park to the viewing platform for Caroline Sinkhole. This sinkhole sits above the water table and is filled with green grasses and hanging vines which border the incredible internal ledges and topography.

Map Ref: R17



## HELLS HOLE

Hells Hole is located in Caveton. The viewing platform gives a great vantage point for what looks like deep black water but is instead the clearest water.

Map Ref: R16





Jessie Cripps (South Australian Tourism Commission), Kilsby Sinkhole, Limestone Coast.

## KILSBY SINKHOLE

One of the most significant dive sites in Australia, Kilsby Sinkhole provides the perfect landscape to scuba dive, snorkel or dive in the crystal-clear limestone-filtered water with a certified guide. Above water tours are also available. Kilsby Sinkhole is located on private property and bookings are essential.

Map Ref: N11



## LITTLE BLUE LAKE

Only a short drive from Mount Gambier, the Little Blue Lake is the perfect place to 'swim in a sinkhole'. Take the small staircase that leads you to the water's edge and access the water by the pontoon.

Map Ref: P11



## UMPFERSTON SINKHOLE / BALUMBUL

Also known as the 'sunken garden', this sinkhole is accessible by a steep staircase and when at the bottom, is other-worldly. With an abundance of flora and hanging vines, this picturesque sunken garden is a must-experience.

Map Ref: J15







## CAVE GARDEN / THUGI

Situated in the centre of the city, Cave Garden/Thugi is located on the southern side of The Riddoch Arts and Cultural Centre. Take in the view from the platform overhead, or walk down into the sinkhole for a closer look. After significant rainfall, you may also see a waterfall. A light show tells Aboriginal Dreamtime stories every evening – times vary.

Map Ref: J14



## ENGELBRECHT CAVE

Experience this cave system that runs underneath our city. Take a paid tour down into the dry cave and see where qualified cave divers enter the wet cave to further explore the secret tunnels and water-filled passages.

Map Ref: I13



## PRINCESS MARGARET ROSE CAVE

The Princess Margaret Rose Cave is in the Lower Glenelg National Park. This cave is filled with unique formations, including rare cave coral, rimstone pools and saw-toothed shawls. Take a paid tour through the cave and experience the stories about the history of this site.

Map Ref: T20



Robert Blackburn, Princess Margaret Rose Cave, Lower Glenelg National Park, Visit Victoria



## TANTANOOLA CAVE

Be guided on a paid tour of this ancient cave and hear the stories on the formation of this geological wonder. The cavern is filled with spectacular stalactites, stalagmites, shells and fossils. After your tour, take the 500m hike up the cliff for panoramic views of the surrounding forest with abundant flora and fauna.

Map Ref: B6







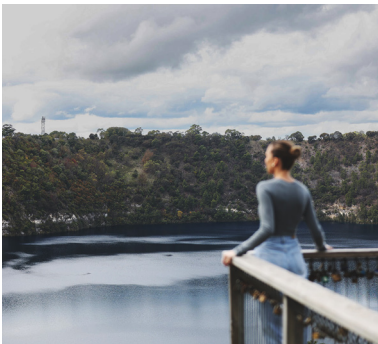
*Visit our website*



# Crater Lakes



Blue Lake/Warwar by Take Us With You



## BLUE LAKE / WARWAR

Located in a volcanic crater, this lake showcases an ever-changing blue colour with crystal clear water which has been filtered through the limestone. Blue Lake/Warwar can be seen from one of the multiple viewing platforms around the perimeter; walk or drive your way around to appreciate the sheer magnitude.



## BROWNE LAKE / KROWERATWARI

No longer a lake, but filled with lush grass, tall trees and a disc golf course, this is a great spot to visit and admire the surrounding views of the crater lakes.

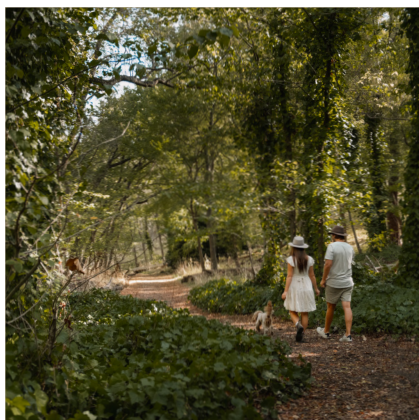






## CENTENARY TOWER

Centenary Tower sits on the rim of the volcanic crater. With sweeping views to the south, including countryside, Mount Schank and on a clear day, to the ocean. Accessed through a short, steep walk to the tower. There is a small fee upon entry. The flag is flying when the tower is open.



## LEG OF MUTTON LAKE / YATTON LOO

No longer a lake, this nature-filled location has a trail that winds around 1.6 kms. Start this walk at the car park near Blue Lake/ Warwar and make your way down the access road; follow the loop track around the now dry lake bed. A delight in every season.



## VALLEY LAKE / KETLA MALPI

Down in the volcanic crater, you will find our second lake, Valley Lake/Ketla Malpi. Take your paddleboard or kayak to further explore the landscape, or enjoy a picnic with BBQs on site. The playground and grassed area makes a perfect spot for families and just up the road, you can explore the Valley Lake Conservation Park with a nature walk.





# Ponds & Rivers



Cathy Lu (South Australian Tourism Commission), Ewens Ponds Conservation Park, Limestone Coast

## EWENS PONDS

Explore the spring-fed underwater garden at Ewens Ponds by snorkelling through the shallow channels of the ponds. The channels connect three basin-shaped ponds which are approximately 10 metres deep. A permit from National Parks SA must be obtained to dive or snorkel. Visit their website for more information.

Map Ref: W14



## GLENELG RIVER

Explore the Glenelg River Canoe Trail stretching from Dartmoor to Nelson, meandering through the lower reaches of the Glenelg River. Take in the sights of towering limestone cliffs and the abundant wildlife that calls the park home. Visit the Parks Victoria website for more information.

Map Ref: U19



Chloe Morris (South Australian Tourism Commission), Piccaninnie Ponds Conservation Park, Limestone Coast

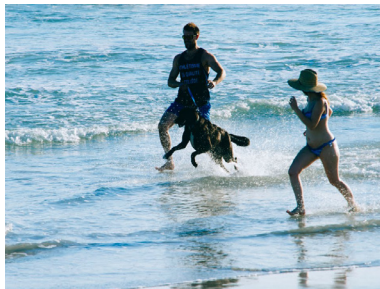
## PICCANINNIE PONDS

Explore the spectacular underwater world of Piccaninnie Ponds which is recognised as a wetland of international importance. The crystal clear freshwater is perfect for diving, snorkelling or scuba diving. Permits must be obtained through the National Parks SA website.

Map Ref: X18



# Shorelines



## BROWN BAY

Located just east of Port MacDonnell, this beach is known for its excellent surf conditions, nesting shorebirds and stunning coastline. Take your surfboard, sea kayak, binoculars or bathers. Call in through the seaside town of Port MacDonnell on your way.

Map Ref: W16



## CAPE BANKS LIGHTHOUSE

This impressive lighthouse is located on a headland in Carpenter Rocks. Although not open, this lighthouse is a significant structure and is on the South Australian Heritage Register. Also the site of some of the best views out over the Southern Ocean.

Map Ref: N2

Will Hudson (Cape Banks Lighthouse)



## CAPE NORTHUMBERLAND

South Australia's most southern point equipped with the most magnificent rugged coastline, will provide you with uninterrupted views of the sun setting. With limestone cliffs and rock formations scattered around the coastline, you will see an abundance of shorebirds and although not open, Cape Northumberland lighthouse towers over the site.

Map Ref: X10



## PISCES STAR SHIPWRECK

A short walk from the Cape Banks Lighthouse, the Pisces Star shipwreck is best viewed at low tide. Popular with photographers, this modern wreck lies just off the shoreline.

Map Ref: O2

# Conservation Parks & Forests



Valley Lake/Ketta Maipi by Czech Aus Out



## DINGLEY DELL CONSERVATION PARK

Set in the idyllic bush setting of Dingley Dell Conservation Park is the former home of one of Australia's famous poets, Adam Lindsay Gordon. Dingley Dell cottage although currently not open, remains preserved and the surrounding conservation park remains accessible and is free for you to enjoy.

Map Ref: W11



## EWEN PONDS CONSERVATION PARK

This park consists of three large freshwater springs interconnected by a series of shallow channels. The greater landscape is dedicated to conservation. Download your flora and fauna species list via the National Parks SA website before visiting. Permits for diving or snorkelling must be obtained from National Parks SA.

Map Ref: W14



Jack Brookes (South Australian Tourism Commission), Ewens Ponds Conservation Park, Limestone Coast.





## GERMEIN RESERVE

Enjoy the trails through native flora, wetland areas and the greater reserve areas. Located just outside of Port MacDonnell, this reserve provides the perfect backdrop to experience the natural area.

Map Ref: X11



## HONAN MINT TRAIL

The three trails are located within the floristically diverse Honan Native Forest Reserve. The trails begin at either the Swamp Gum or Wildflower carparks and are clearly marked with green, blue and purple trail markers. Time allowed for walking the trails is based on an average speed of 3km/hour. For more information, please visit the Forestry SA website.

Map Ref: D10



## LOWER GLENELG NATIONAL PARK

Spend your days and nights exploring this landscape filled with bushland, limestone gorges, the Glenelg river and an estuary. Home to the Great South West Walk, visit Parks Victoria to understand more about this park and to plan your visit.

Map Ref: U19



## PENAMBOL CONSERVATION PARK

This park located on a consolidated inland dune system, is home to Caroline Sinkhole and has two scenic walks to experience; The Butterfly Walk (1 km) and the Wombat Walk (4.5 kms). The Conservation Park has locally significant fauna so keep an eye out.

Map Ref: S17





Chloe Morris (South Australian Tourism Commission), Piccaninnie Ponds Conservation Park, Limestone Coast

## PICCANINNIE PONDS CONSERVATION PARK

Take a walk along the beach and see the freshwater springs bubble up onto the sand. There is also a walking trail to the ponds outlet through coastal wattle and beard heath. The walk then leads inland via boardwalks into silky tea-tree to a lookout with views of the wetland.

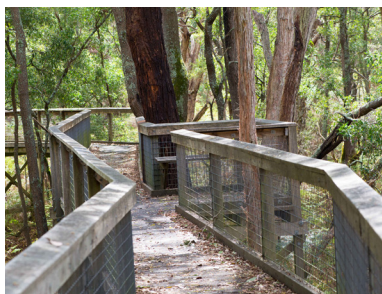
Map Ref: X18



## TANTANOOLA CAVES CONSERVATION PARK

With picnic grounds and a cliff top walking trail which offers panoramic views of the park, enjoy bushwalking before taking a paid guided tour of the Tantanoola Cave. See our cave listing for booking information.

Map Ref: B6



## TELFORD SCRUB CONSERVATION PARK

Walk along the Stringybark Forest Walking Trail (2.5 hours) or be placed amongst the trees on the 4 metre high Forest Canopy Walking Trail (1 hour) through the park.

Map Ref: B14



## VALLEY LAKE CONSERVATION PARK

Explore this conservation area featuring a wide array of flora species. Meander through the grounds, over the boardwalk areas and enjoy the sights and sounds of nature in the volcanic crater. Gold coin donation welcomed.

Map Ref: K14







## MOUNT GAMBIER

Mount Gambier, also known as Berrin, is a maar complex associated with the Newer Volcanics Province. The complex contains four maars, Blue Lake/Warwar, Valley Lake/Ketla Malpi, Leg of Mutton Lake/Yatton Loo and Browne Lake/Kroweratwari. Drive down into the volcano on sealed roads to discover the enveloped natural setting.

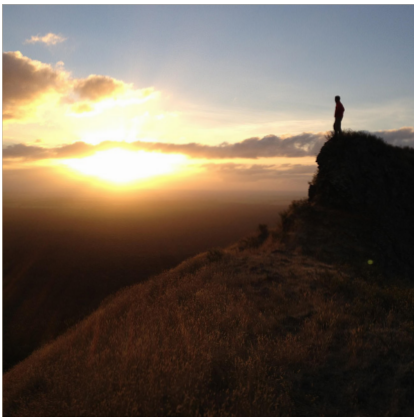
**Map Ref: K14**



## MOUNT SCHANK

Known as Australia's youngest volcano, Mount Schank last erupted over 4500 years ago. Take the 900m walk up to the rim of the volcanic crater for a 360 degree view to the coast and surrounding countryside. A 2km walking trail continues around the rim of the crater.

**Map Ref: Q13**



## CRAITBUL AND VOLCANO – THE MOVIE

Screening daily at The Riddoch Arts and Cultural Centre, this movie tells the incredible story of our land of volcanism, sinkholes, caves and crater lakes. Taking you through the history of eruptions that shaped Mount Gambier and the Kanawinka region beginning with the dreamtime story of Craitbul.

**Map Ref: J14**

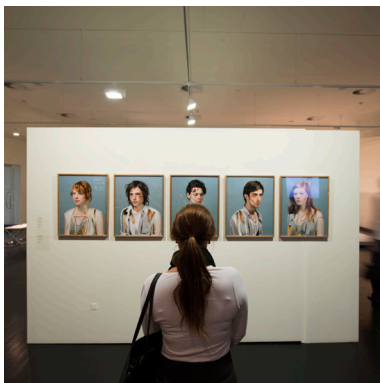


# Mount Gambier



## MOUNT GAMBIER LIBRARY

The Library is a dynamic space for people of all ages to connect, play, learn, socialise and enjoy. With a wonderful Children's Cave/Yulangu Kanapinan inspired from local underwater caves and café overlooking the Cave Garden/Thugi. Offering free Wi-Fi, computers, printing/photocopying/scanning facilities, bike hire, disc golf hire and much more. Everyone is welcome to join for free.



## THE RIDDOCH ARTS & CULTURAL CENTRE

The Riddoch Arts and Cultural Centre is located in the CBD. It showcases local artists, as well as state and national touring exhibitions. The gift shop features works by local artists and the Craitbul and Volcano movies are shown daily upstairs in the Dress Circle.



## WULANDA RECREATION AND CONVENTION CENTRE

Wulanda Recreation and Convention Centre is a state-of-the-art multi-purpose sport, aquatic, conference and events facility in Mount Gambier. Wulanda, meaning 'enjoy or cherish' in Bunganditj language, is a gathering place for all to participate in sports, recreation, community activities and events. The new centre offers 4 indoor pools including 25-metre lap pool, learn-to-swim, warm water program pool, and children's splash pad. There is also an outdoor 50m

pool open during the warmer months. Along with six multi-purpose courts, a gym and allied services providing ample opportunity to participate in sports and recreation.





# Our City

Stay in Mount Gambier with a vibrant café culture and retail experiences at your doorstep. Explore the city filled with historic buildings, artist murals, playgrounds and reserves. Free bike hire is available from The Riddoch Arts and Cultural Centre, the Mount Gambier Library and the Visitor Centre to help you explore.



# Mount Gambier Visitor Centre



We are here to help you explore and immerse yourself in Mount Gambier and surrounds. Visit the Visitor Centre to collect your map, guide and chat with a local about all the wonderful things to do here in the land of the sinkholes, caves and crater lakes.



## Opening hours:

Monday – Friday	9am – 5pm
Weekends	10am – 4pm
Public Holidays	10am – 4pm
Closed Christmas Day	

Phone us **1800 087 187**

## SOCIAL MEDIA



For inspiration (and to share your trip) in the land of sinkholes, crater lakes, caves, forests and stormy shorelines, head to [@visitmountgambier](#)



For all the 'local' intel from the team at the Mount Gambier Visitor Centre, head to [@mountgambiervisitorcentre](#)





## EVENTS & 'WHAT'S ON' GUIDE

Mount Gambier is home to a range of events and festivals. Find the most up-to-date information through our QR code, and find out what's on whilst you are staying with us.



## MAPS & GUIDES

Make organising your trip easier with our guides. Whether it is where you can take your pet, where to find a laundromat, and even the best op-shops, you will find it here.



## ACCOMMODATION

Need somewhere to stay? Find a range of accommodation here.



## EATERIES

Eat your way through Mount Gambier and surrounds here.





City of  
Mount Gambier



Blue Lake/Warwar by Czech Aus Out Photography